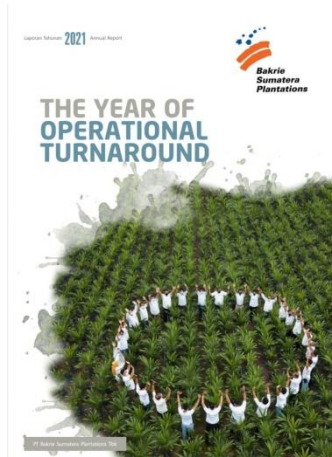
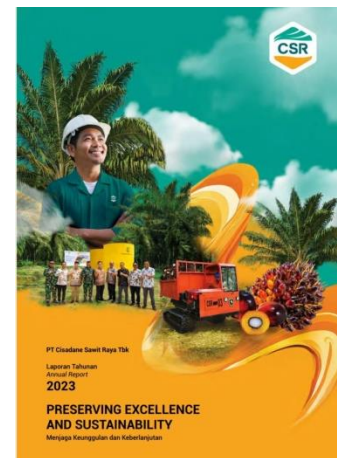
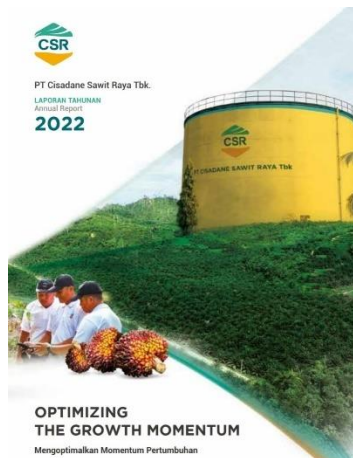
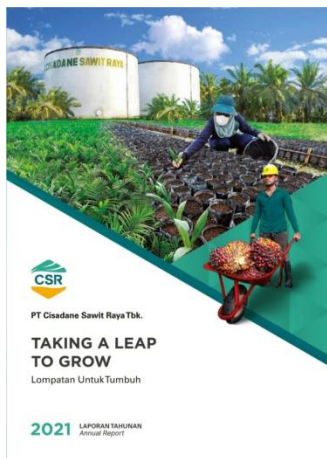


# LAMPIRAN

## Lampiran 1. Laporan Tahunan 2021 dan 2023



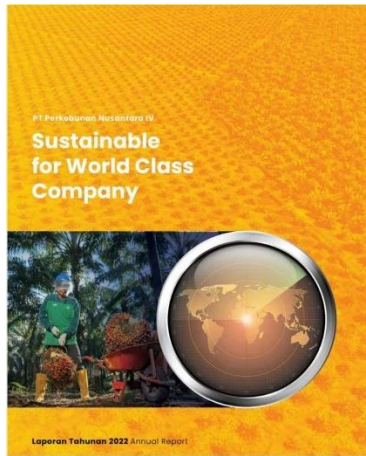
**PT Bakrie Sumatra Plantations**



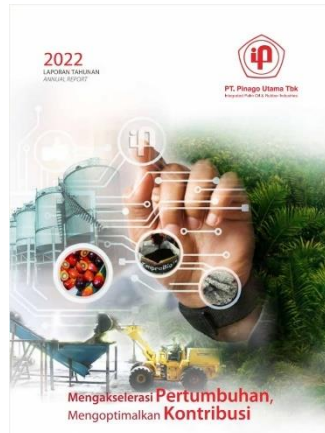
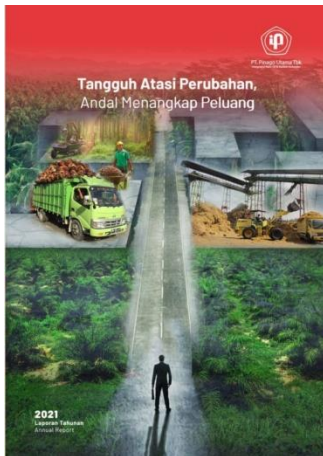
**PT Cisdane Sawit Raya**



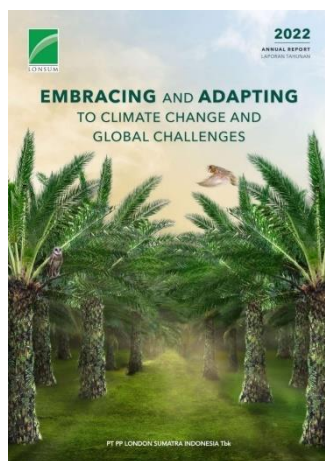
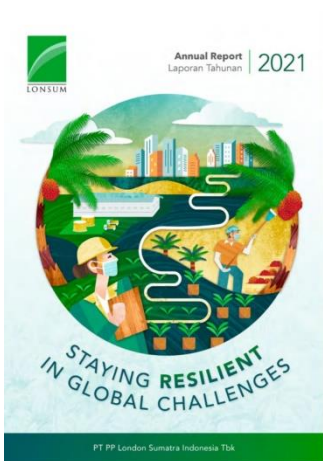
**PT Perkebunan Nusantara III**



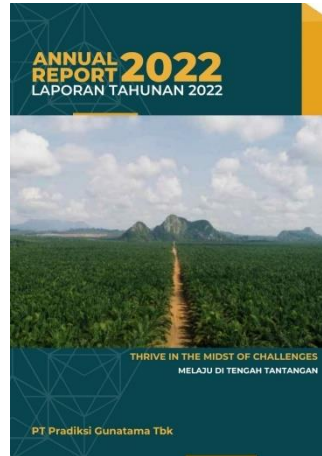
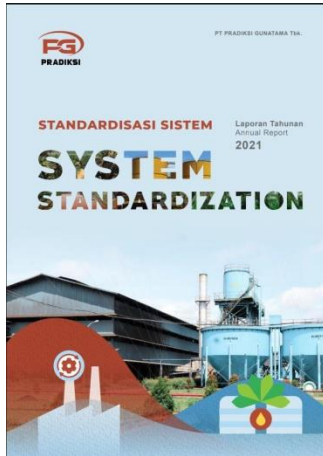
**PT Perkebunan Nusantara IV**



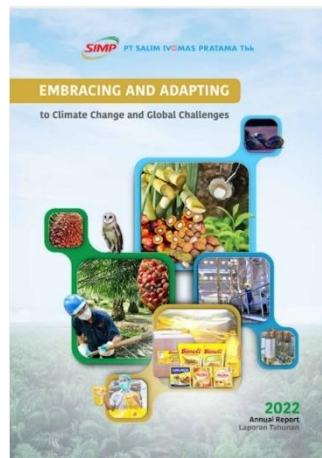
**PT Pinago Utama**



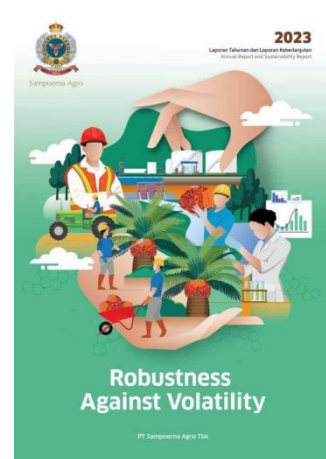
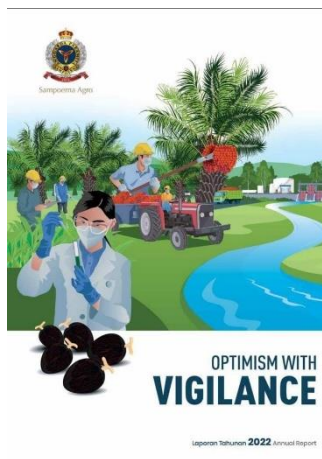
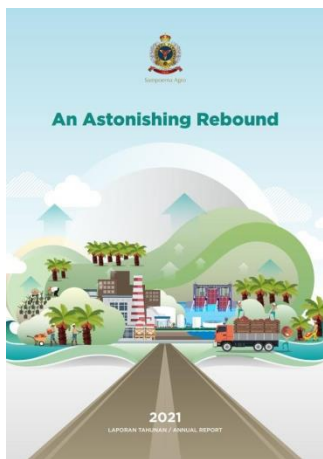
**PT PP London Sumatra Indonesia**



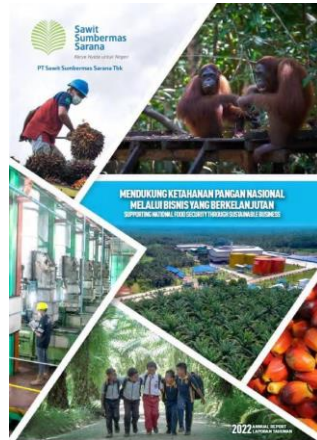
**PT Pradiksi Gunatama**



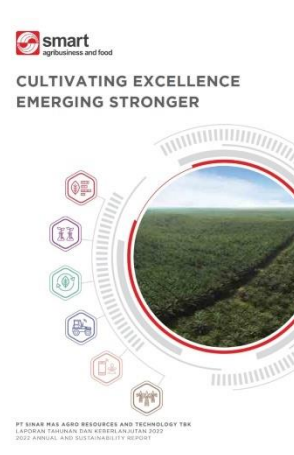
**PT Salim Ivomas Pratama**



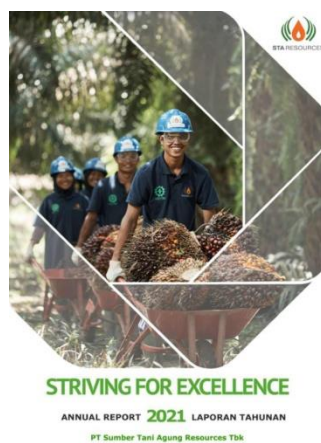
**PT Sampoerna Agro**



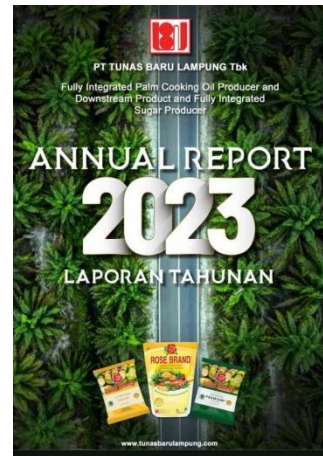
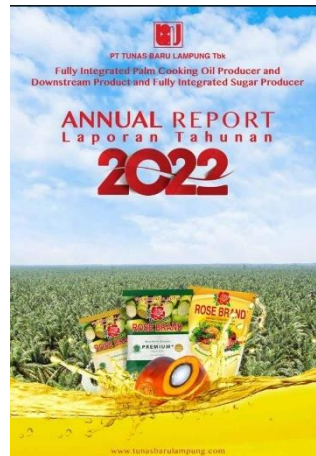
**PT Sawit Sumbermas Sarana**



**PT Smart**

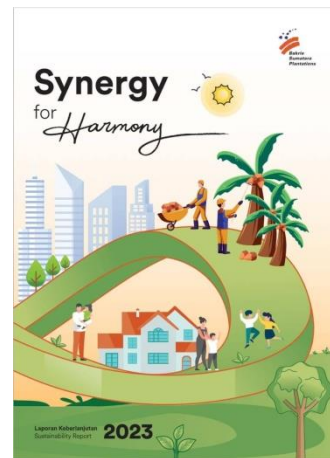
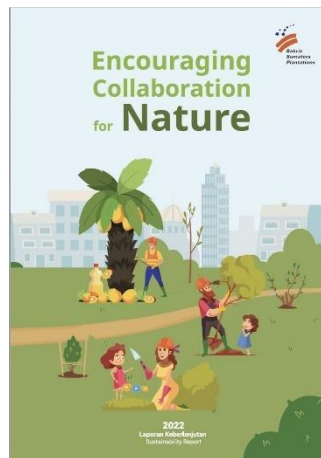
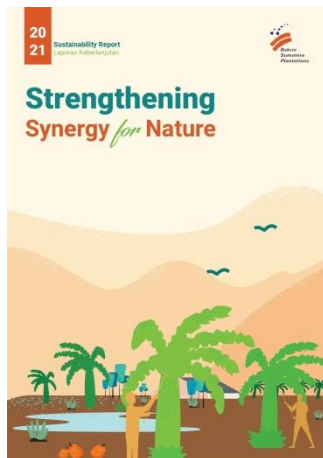


**PT Sumber Tani Agung Resources**

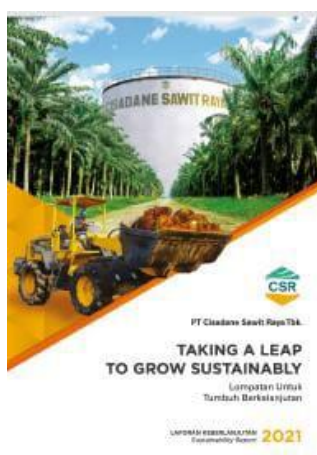


**PT Tunas Baru Lampung**

**Lampiran 2. Laporan Keberlanjutan 2021 & 2023**



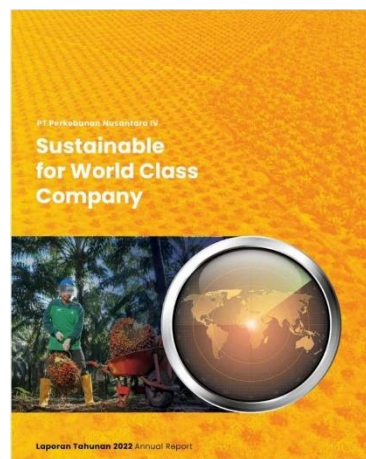
**PT Bakrie Sumatra Plantations**



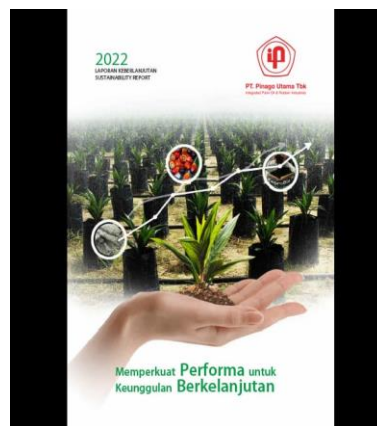
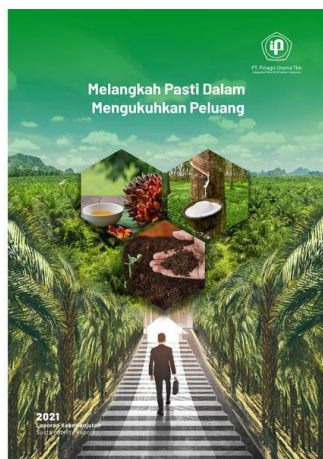
**PT Cisdene Sawit Raya**



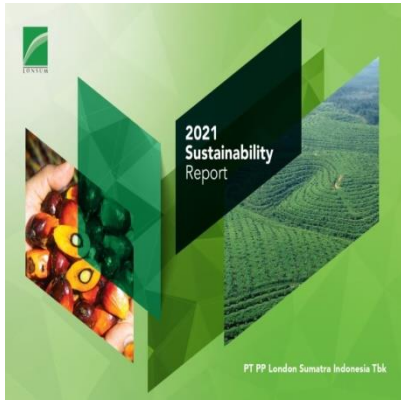
**PT Perkebunan Nusantara III**



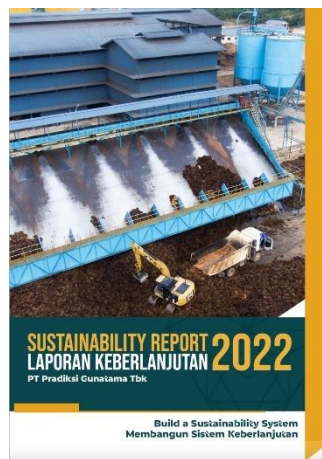
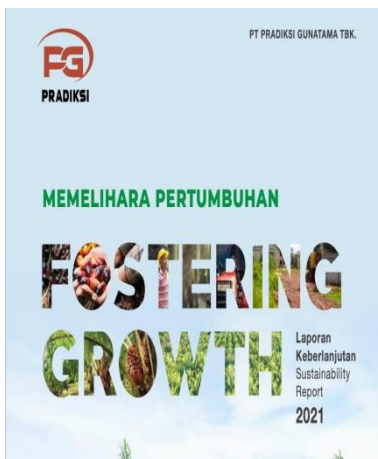
**PT Perkebunan Nusantara IV**



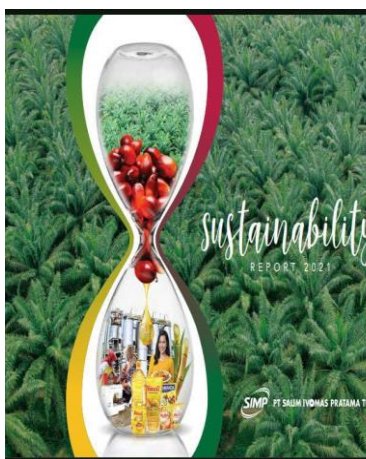
**PT Pinago Utama**



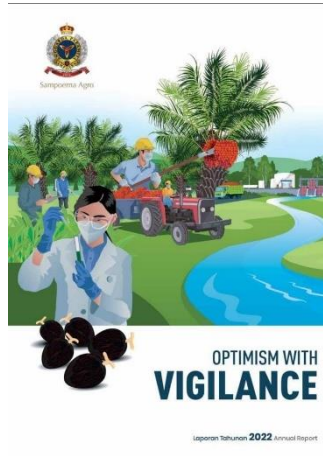
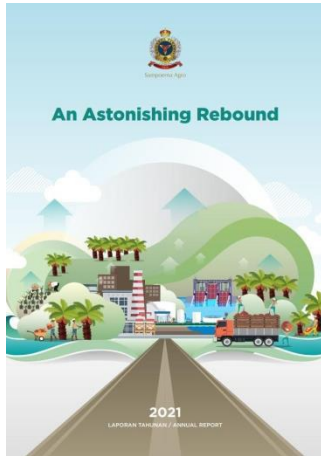
**PT PP London Sumatra Indonesia**



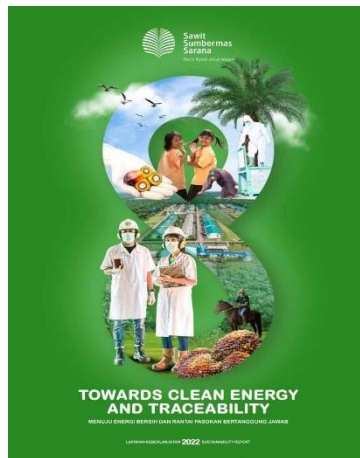
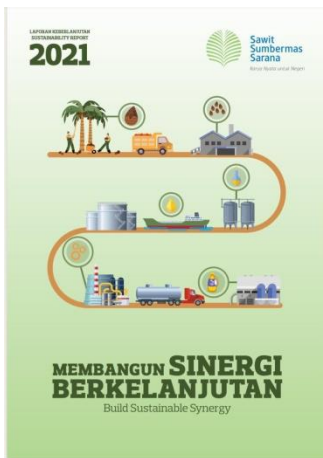
**PT Pradiksi Gunatama**



**PT Salim Ivomas Pratama**



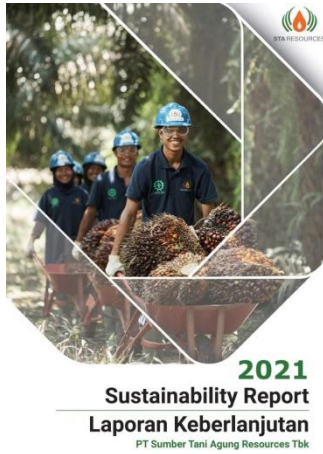
**PT Sampoerna Agro**



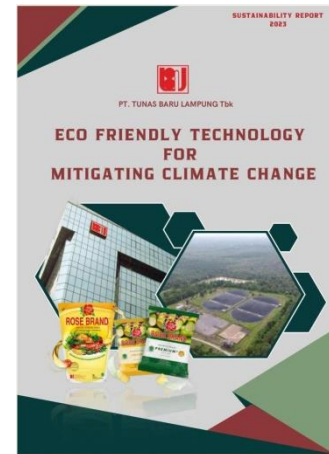
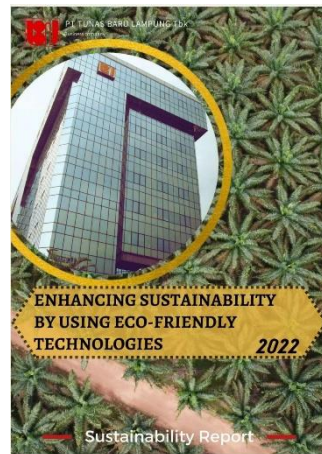
**PT Sawit Sumbermas Sarana**



**PT Smart**



**PT Sumber Tani Agung Resources**



**PT Tunas Baru Lampung**



Kode Pengungkapan	SSMS			SMAR			STAA		
	2021	2022	2023	2021	2022	2023	2021	2022	2023
F.4	1	1	1	1	1	1	0	1	1
F.5	1	1	1	1	1	1	0	1	1
F.6	1	1	1	1	1	1	0	1	1
F.7	1	1	1	1	1	1	0	1	1
F.8	1	1	1	1	1	1	1	1	1
F.9	1	1	1	1	1	1	0	1	1
F.10	1	1	1	1	1	1	1	1	1
F.11	1	1	1	1	1	1	0	1	1
F.12	1	1	1	1	1	1	1	1	1
F.13	1	1	1	1	1	1	1	1	1
F.14	1	1	1	1	1	1	1	1	1
F.15	1	1	1	1	1	1	0	1	1
F.16	1	1	1	1	1	1	0	1	1
<b>Jumlah Item Pengungkapan yang Dipenuhi</b>	<b>13</b>	<b>13</b>	<b>13</b>	<b>13</b>	<b>13</b>	<b>13</b>	<b>5</b>	<b>13</b>	<b>13</b>
<b>Jumlah Skor Item Maksimum</b>	<b>13</b>	<b>13</b>	<b>13</b>	<b>13</b>	<b>13</b>	<b>13</b>	<b>13</b>	<b>13</b>	<b>13</b>
<b>Score</b>	<b>100%</b>	<b>100%</b>	<b>100%</b>	<b>100%</b>	<b>100%</b>	<b>100%</b>	<b>38%</b>	<b>100%</b>	<b>100%</b>
<b>Klasifikasi Tingkat Pengungkapan</b>	<b>Fully applied</b>	<b>Fully applied</b>	<b>Fully applied</b>	<b>Fully applied</b>	<b>Fully applied</b>	<b>Fully applied</b>	<b>Limited disclose</b>	<b>Fully applied</b>	<b>Fully applied</b>

Kode Pengungkapan	TBLAA		
	2021	2022	2023
F.4	0	0	1
F.5	1	1	1
F.6	1	1	1
F.7	1	1	1
F.8	0	0	1
F.9	0	0	1
F.10	1	1	1
F.11	1	1	1
F.12	1	1	1
F.13	1	1	1
F.14	0	0	1
F.15	0	0	1
F.16	7	7	12
<b>Jumlah Item Pengungkapan yang Dipenuhi</b>	<b>13</b>	<b>13</b>	<b>13</b>
<b>Jumlah Skor Item Maksimum</b>	<b>54%</b>	<b>54%</b>	<b>92%</b>
<b>Score</b>	<b>Partially applied</b>	<b>Partially applied</b>	<b>Fully applied</b>
<b>Klasifikasi Tingkat Pengungkapan</b>	<b>Fully applied</b>	<b>Fully applied</b>	<b>Fully applied</b>

## Lampiran 5. Statistik Deskriptif

Descriptive Statistics					
	N	Minimum	Maximum	Mean	Std. Deviation
x2021	13	24.37	29.17	27.2762	1.37260
x2022	13	25.84	29.43	27.7646	1.05987
x2023	13	23.99	27.80	26.7162	1.12735
y2021	13	38.00	100.00	75.6923	21.29704

Descriptive Statistics					
	N	Minimum	Maximum	Mean	Std. Deviation
y2022	13	31.00	100.00	82.9231	19.80514
y2023	13	77.00	100.00	92.9231	7.87889
Valid N (listwise)	13				

### Lampiran 7. Uji Normalitas

Tests of Normality						
	Kolmogorov-Smirnov <sup>a</sup>			Shapiro-Wilk		
	Statistic	df	Sig.	Statistic	df	Sig.
x2021	.228	13	.063	.934	13	.383
x2022	.215	13	.102	.907	13	.169
x2023	.225	13	.070	.842	13	.022
y2021	.217	13	.096	.887	13	.088
y2022	.234	13	.050	.821	13	.012
y2023	.277	13	.007	.826	13	.014

### Lampiran 8. Uji Korelasi

Correlations						
			x2021	x2022	x2023	y2021
Spearman's rho	x2021	Correlation Coefficient	1.000	.967**	.900**	-.379
		Sig. (2-tailed)	.	.000	.000	.202
		N	13	13	13	13
	x2022	Correlation Coefficient	.967**	1.000	.817**	-.295
		Sig. (2-tailed)	.000	.	.001	.328
		N	13	13	13	13

Correlations						
			x2021	x2022	x2023	y2021
	x2023	Correlation Coefficient	.900**	.817**	1.000	-.653*
		Sig. (2-tailed)	.000	.001	.	.016
		N	13	13	13	13
	y2021	Correlation Coefficient	-.379	-.295	-.653*	1.000
		Sig. (2-tailed)	.202	.328	.016	.
		N	13	13	13	13
	y2022	Correlation Coefficient	-.261	-.124	-.566*	.774**
		Sig. (2-tailed)	.389	.687	.044	.002
		N	13	13	13	13
	y2023	Correlation Coefficient	-.199	-.213	-.291	.239
		Sig. (2-tailed)	.515	.485	.334	.432
		N	13	13	13	13

Correlations				
			y2022	y2023
Spearman's rho	x2021	Correlation Coefficient	-.261	-.199
		Sig. (2-tailed)	.389	.515
		N	13	13
	x2022	Correlation Coefficient	-.124	-.213
		Sig. (2-tailed)	.687	.485
		N	13	13
	x2023	Correlation Coefficient	-.566*	-.291
		Sig. (2-tailed)	.044	.334
		N	13	13

Correlations				
			y2022	y2023
	y2021	Correlation Coefficient	.774**	.239
		Sig. (2-tailed)	.002	.432
		N	13	13
	y2022	Correlation Coefficient	1.000	.439
		Sig. (2-tailed)	.	.133
		N	13	13
	y2023	Correlation Coefficient	.439	1.000
		Sig. (2-tailed)	.133	.
		N	13	13